



Holden Road, Woodside Park, N12 7AG  
£760,000 Leasehold Council Tax Band

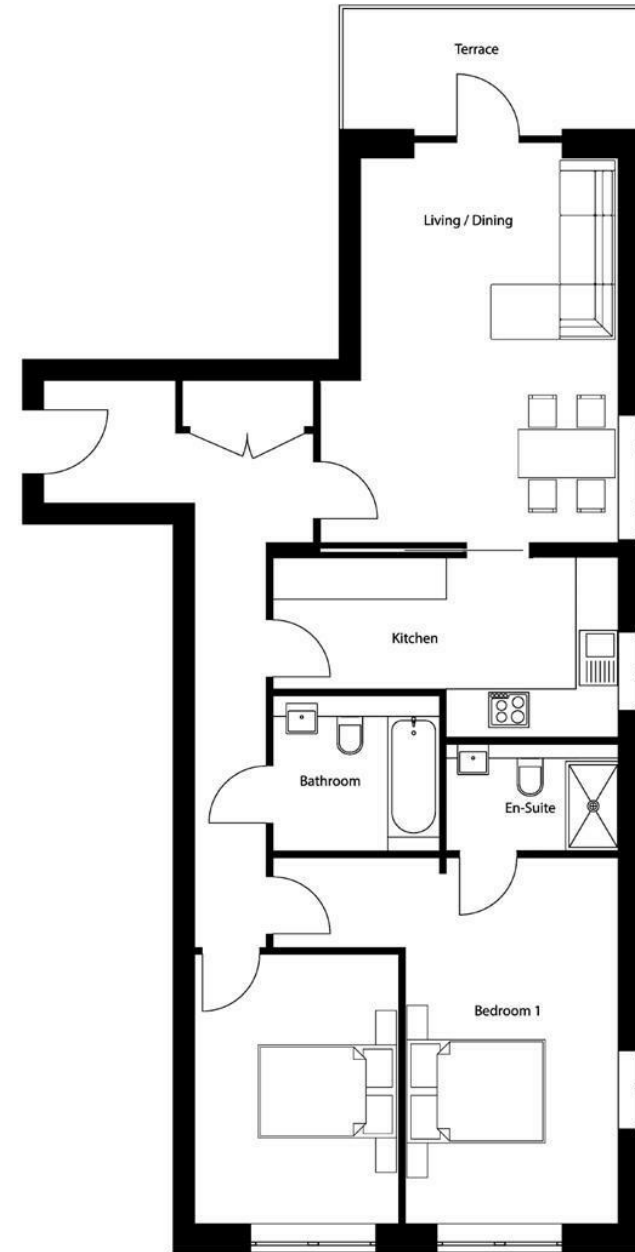
**REAL ESTATES**  
Est.1981

Estate Agents · Residential Sales · Investments · Lettings

ONLY 3 FLATS REMAINING. PRICES FROM £700,000. An opportunity to acquire this superb 1ST FLOOR apartment of 985 sq ft in this new development of just 34 exquisitely finished apartments with SECURE UNDERGROUND PARKING, excellent transport links, great local amenities and green spaces. The Westbury offers the very best of urban and rural living.

The apartments are exceptionally well fitted with high specification designer kitchens and bathrooms, underfloor heating throughout, and are pre-wired for modern entertainment systems.

\* 2 BEDROOMS \* 2 BATHROOMS (1 EN SUITE) \* PRIVATE TERRACE  
\*



Energy Efficiency Rating		Current	Potential
Very energy efficient - lower running costs			
92-100	A		
81-91	B		
69-80	C		
55-68	D		
39-54	E		
21-38	F		
1-20	G		
Not energy efficient - higher running costs			
England & Wales		EU Directive 2002/91/EC	